



Infusion Port Catalog



Bayview Engineering Industries

Contact: Jamie Wells
sales@bayviewengineeringind.com
www.bayviewengineeringind.com

618 Oak Street Unit C
Oak Harbor, Washington 98277
Phone 360-675-5300
Fax 360-675-5500

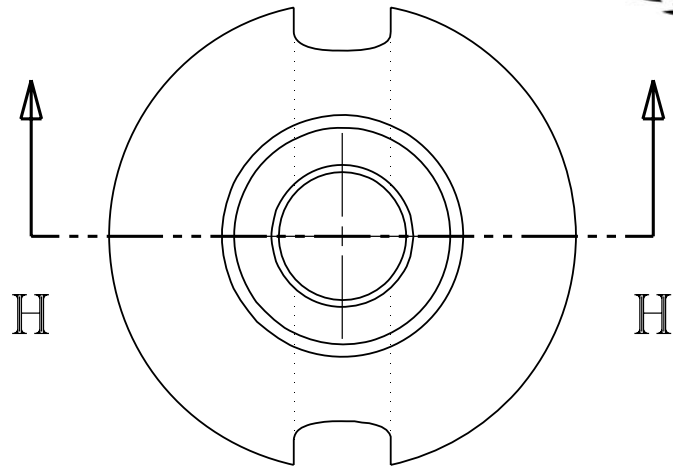
Table of Contents

Type #1	Description	1/30/2008	Approximate Dimensions	Part #	Page
CNC UHMW 1/2" SH fitting Block w/ #2 mouse hole			3" OD X 1-1/2" H with 5/8+" slot	#1 - IP2-H2	1
CNC UHMW 3/4" SH fitting Block w/ #3 mouse hole			3" OD X 1-1/2" H with 3/4+" slot	#1 - IP3-H3	2
CNC UHMW 1/2" SH fitting Block w/ #3 mouse hole			3" OD X 1-1/2" H with 3/4+" slot	#1 - IP2-H3	3
CNC UHMW 3/4" SH fitting Block w/ #2 mouse hole			3" OD X 1-1/2" H with 5/8+" slot	#1 - IP3-H2	4
CNC UHMW 1/2" SH fitting Block w/ out mouse hole			3" OD X 1-1/2" H without slot	#1 - IP2-B	5
CNC UHMW 3/4" SH fitting Block W/ out mouse hole			3" OD X 1-1/2" H without slot	#1 - IP3-B	6
CNC UHMW 1/2" SH fitting Block W/ out mouse hole short			3" OD X 7/8" H without slot	#1 - IP2-BS	7
CNC UHMW 3/4" SH fitting Block W/ out mouse hole short			3" OD X 7/8" H without slot	#1 - IP3-BS	8
Type #2	Description		Approximate Dimensions	Part #	
CNC UHMW 1/2" TH fitting Block w/ #2 mouse hole			3" OD X 1-1/2" H with 5/8+" slot	#2 - IP2-H2	9
CNC UHMW 3/4" TH fitting Block w/ #3 mouse hole			3" OD X 1-1/2" H with 3/4+" slot	#2 - IP3-H3	10
CNC UHMW 1/2" TH fitting Block w/ #3 mouse hole			3" OD X 1-1/2" H with 3/4+" slot	#2 - IP2-H3	11
CNC UHMW 3/4" TH fitting Block w/ #2 mouse hole			3" OD X 1-1/2" H with 5/8+" slot	#2 - IP3-H2	12
CNC UHMW 1/2" TH fitting Block w/ out mouse hole			3" OD X 1-1/2" H without slot	#2 - IP2-B	13
CNC UHMW 3/4" TH fitting Block W/ out mouse hole			3" OD X 1-1/2" H without slot	#2 - IP3-B	14
CNC UHMW 1/2" TH fitting Block W/ out mouse hole short			3" OD X 7/8" H without slot	#2 - IP2-BS	15
CNC UHMW 3/4" TH fitting Block W/ out mouse hole short			3" OD X 7/8" H without slot	#2 - IP3-BS	16
Type #3	Description		Approximate Dimensions	Part #	
CNC UHMW PH Block w/ #2 mouse hole & 1/2" TH Bushing with O-Ring			3" OD X 1-1/2" H with 5/8+" slot	#3 - IP4-H2A2	21
CNC UHMW PH Block w/ #3 mouse hole & 1/2" TH Bushing with O-Ring			3" OD X 1-1/2" H with 3/4+" slot	#3 - IP4-H3A2	21
CNC UHMW PH Block w/ #2 mouse hole & 3/4" TH Bushing with O-Ring			3" OD X 1-1/2" H with 5/8+" slot	#3 - IP4-H2A3	22
CNC UHMW PH Block w/ #3 mouse hole & 3/4" TH Bushing with O-Ring			3" OD X 1-1/2" H with 3/4+" slot	#3 - IP4-H3A3	22
CNC UHMW PH Block w/ out mouse hole & 1/2" TH Bushing with O-Ring			3" OD X 7/8" H without slot	#3 - IP4-BSA2	21
CNC UHMW PH Block w/ out mouse hole & 3/4" TH Bushing with O-Ring			3" OD X 7/8" H without slot	#3 - IP4-BSA3	22
CNC UHMW PH Block w/ #2 mouse hole w/ out bushing			3" OD X 1-1/2" H with 5/8+" slot	#3 - IP4-H2	17
CNC UHMW PH Block w/ #3 mouse hole w/ out bushing			3" OD X 1-1/2" H with 3/4+" slot	#3 - IP4-H3	18
CNC UHMW PH Block w/ out mouse hole w/ out bushing			3" OD X 1-1/2" H without slot	#3 - IP4-B3	19
CNC UHMW PH Block w/ out mouse hole w/ out bushing short			3" OD X 7/8" H without slot	#3 - IP4-BS	20
Bushings & O-ring for Type #3	Description		Approximate Dimensions	Part #	
CNC Aluminum 1/2" TH Flanged Bushing w/ O-ring			1-1/2 OD x 7/16 H	#3 - IPB-2	21
CNC Aluminum 3/4" TH Flanged Bushing w/ O-ring			1-1/2 OD x 7/16 H	#3 - IPB-3	22
O-Ring			1 ID .093 CS	#3 - IPO-0	
Fittings for Type #2 & #3	Description		Approximate Dimensions	Part #	
PVC - 3/4" 90 degree - milled taper x insert fitting			Barb OD .85 ID .56	#75 - IP3-0	23
PVC - 3/4" Straight - milled taper x insert fitting			Barb OD .85 ID .56	#75 - IP4-0	23
PVC - 3/4" Tee - milled taper x insert x insert			Barb OD .85 ID .56	#75 - IP5-0	23
PVC - 1/2" 90 degree - milled taper x insert fitting			Barb OD .65 ID .41	#50 - IP3-0	24
PVC - 1/2" Straight - milled taper x insert fitting			Barb OD .65 ID .41	#50 - IP4-0	24
PVC - 1/2" Tee - milled taper x insert x insert			Barb OD .65 ID .41	#50 - IP5-0	24

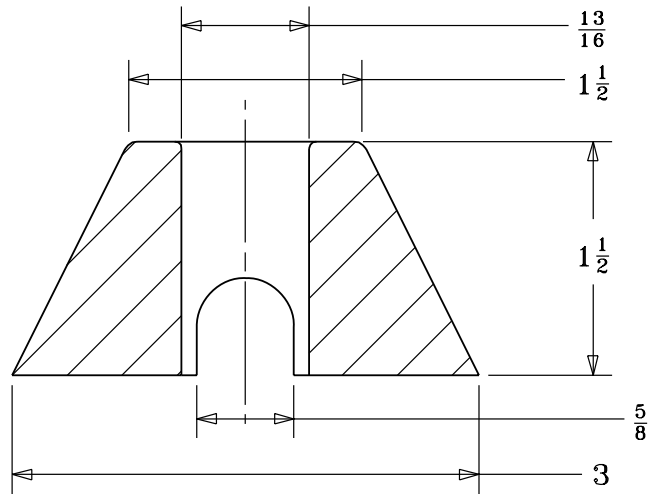


Type 1 Infusion Port

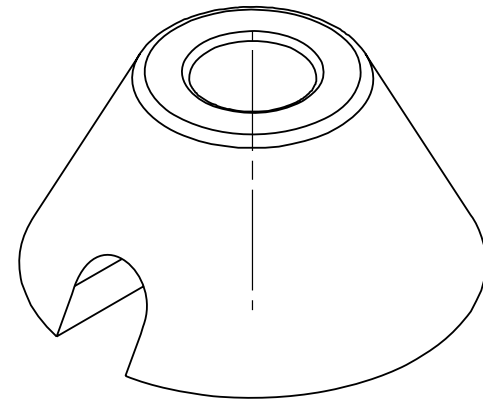
Part Number
1 - IP2-H2



All Dimensions are
approximate



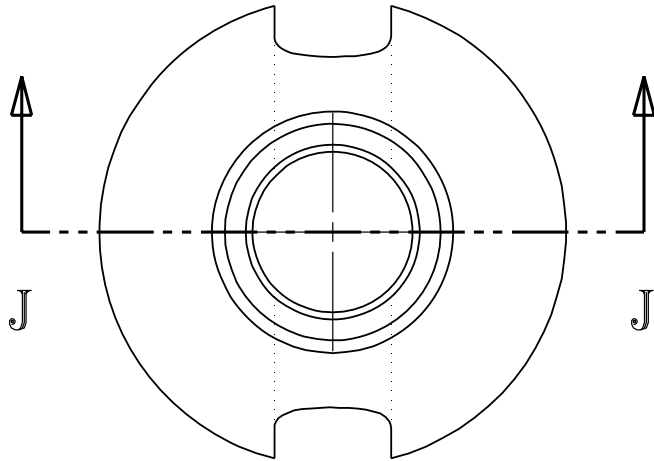
SECTION H-H



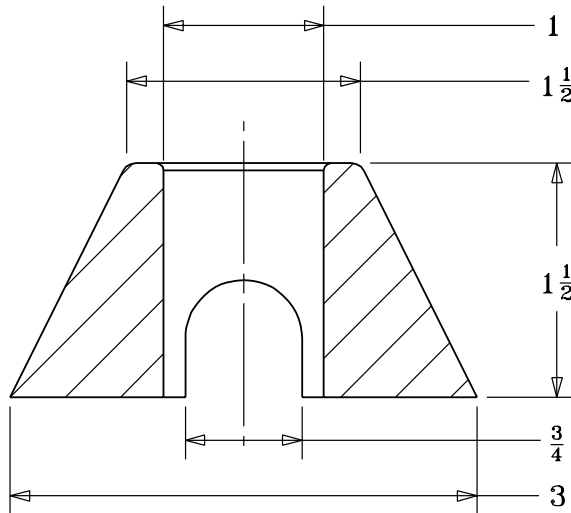


Type 1 Infusion Port

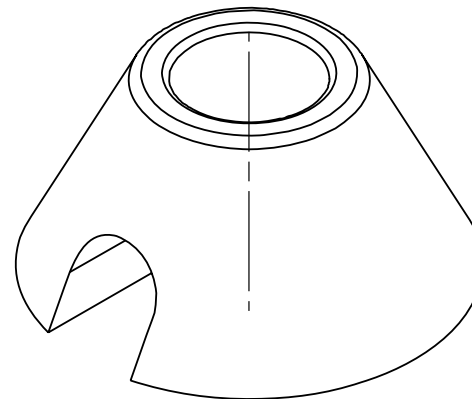
Part Number
1 - IP3-H3



All Dimensions are
approximate



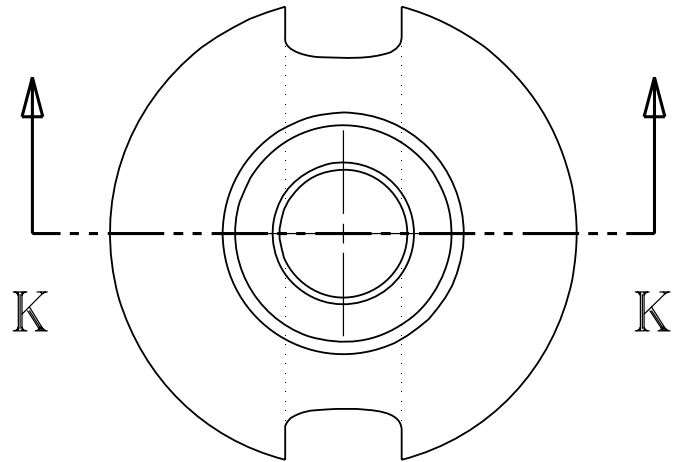
SECTION J-J



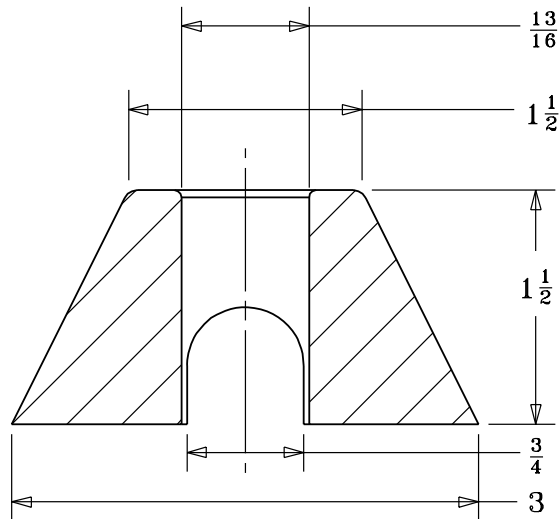


Type 1 Infusion Port

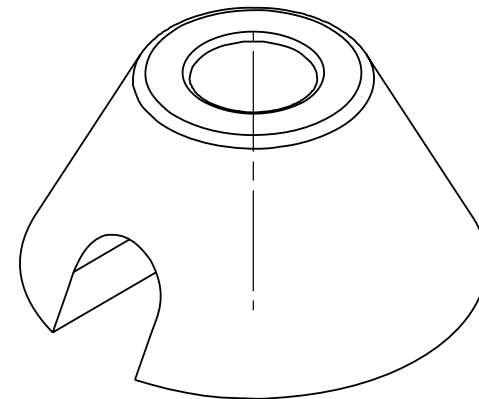
Part Number
1 - IP2-H3



All Dimensions are
approximate



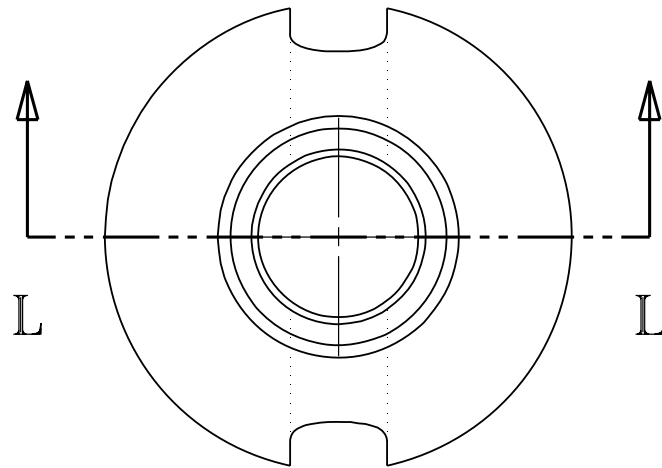
SECTION K-K



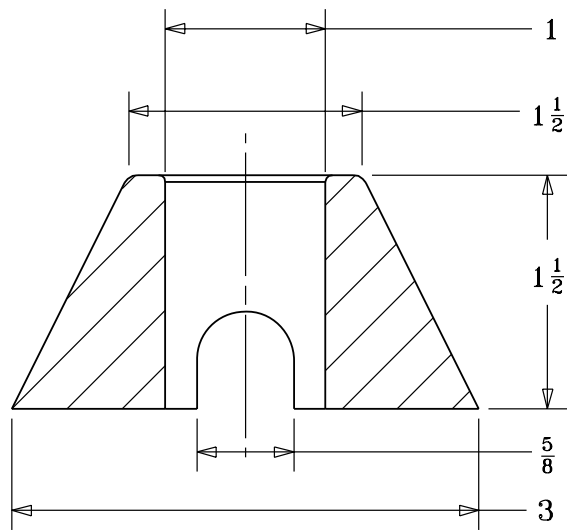


Type 1 Infusion Port

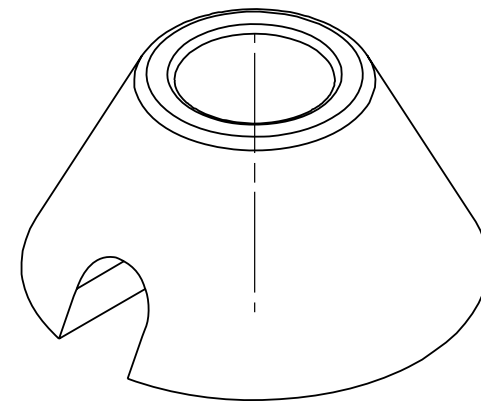
Part Number
1 - IP3-H2



All Dimensions are
approximate



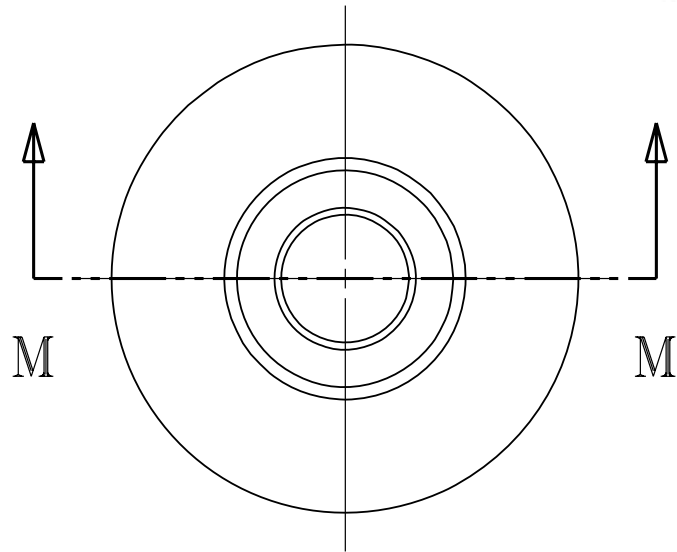
SECTION L-L



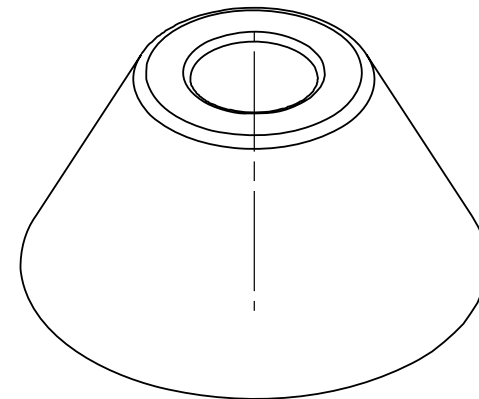
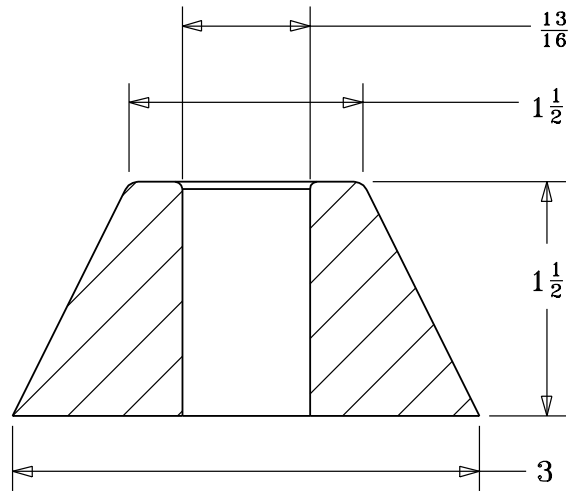


Type 1 Infusion Port

Part Number
1 - IP2-B



All Dimensions are
approximate

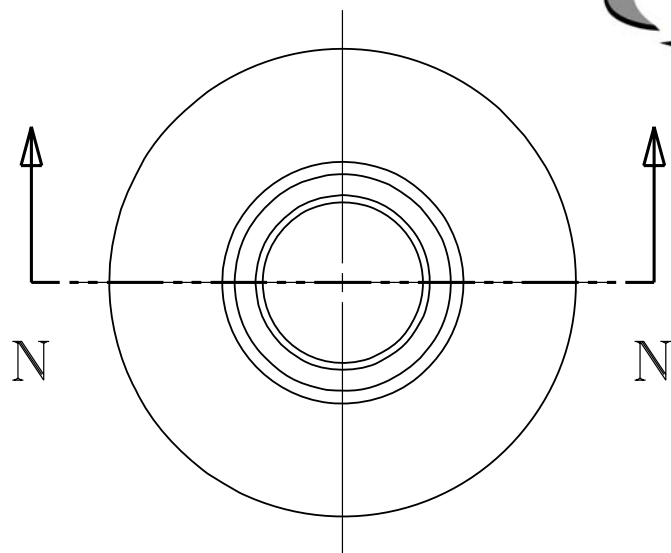




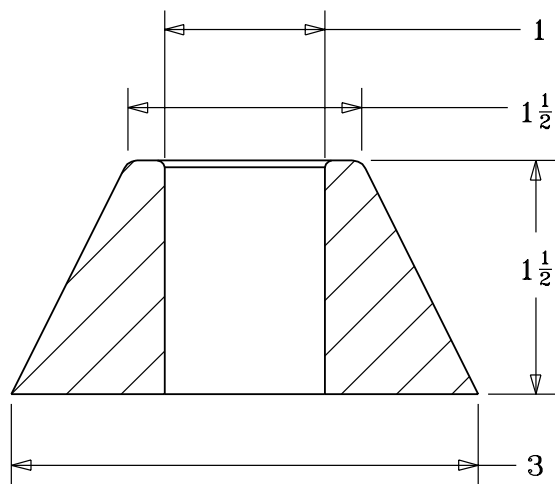
Type 1 Infusion Port

Part Number

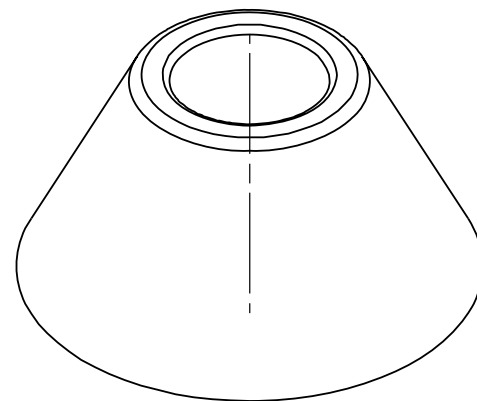
1 - IP3-B



All Dimensions are
approximate



SECTION N-N

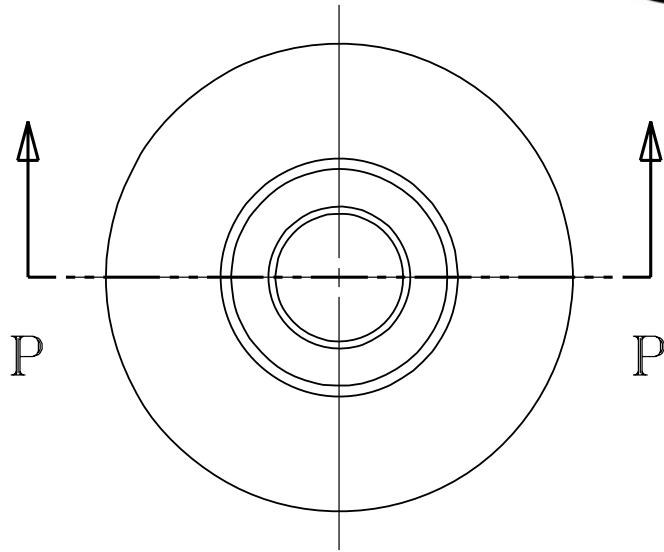




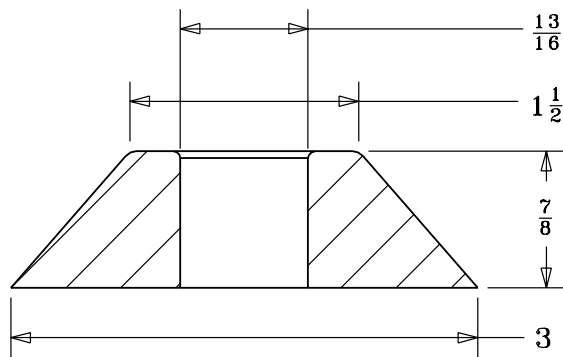
Type 1 Infusion Port

Part Number

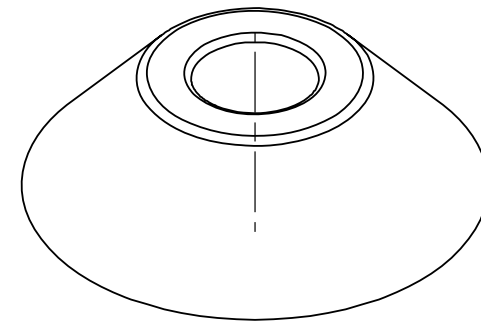
1 - IP2-BS



All Dimensions are approximate



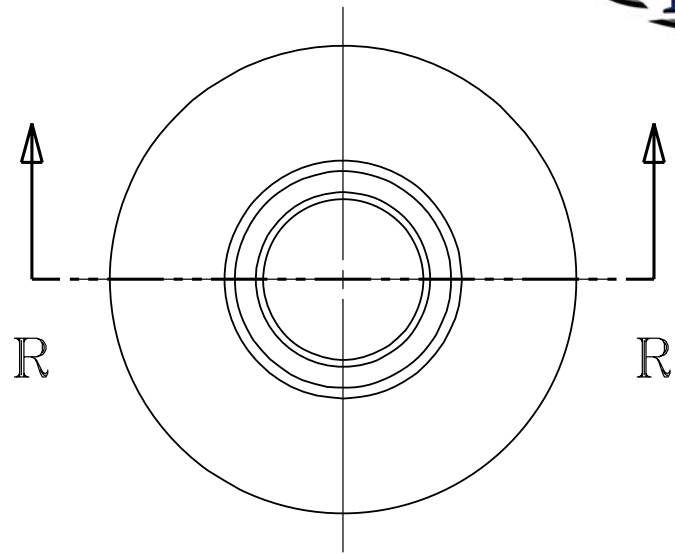
SECTION P-P



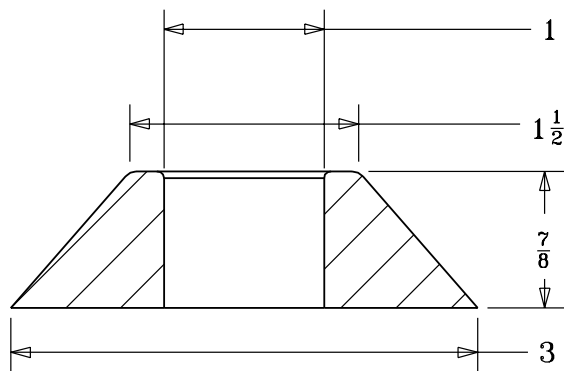


Type 1 Infusion Port

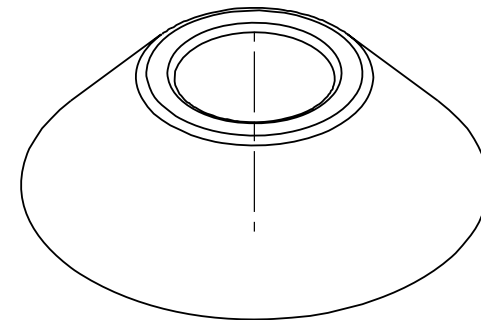
Part Number
1 - IP3-BS



All Dimensions are
approximate



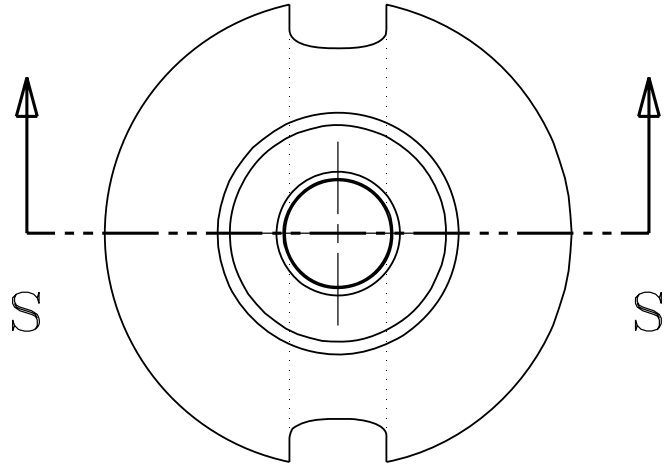
SECTION R-R



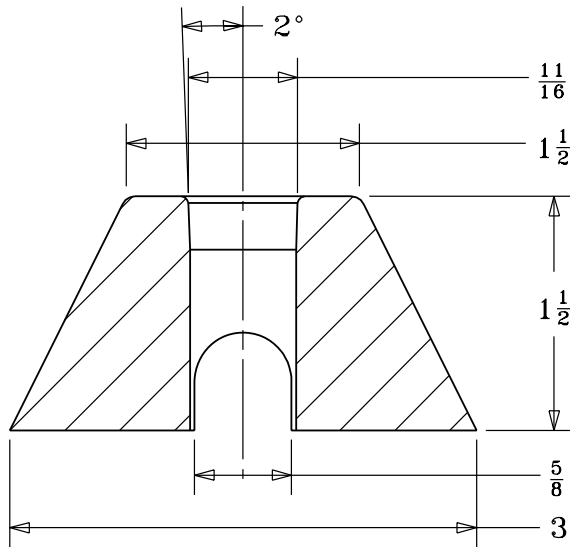


Type 2 Infusion Port

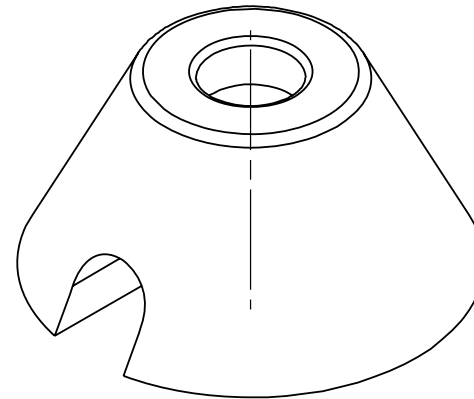
Part Number
2 - IP2-H2



All Dimensions are
approximate



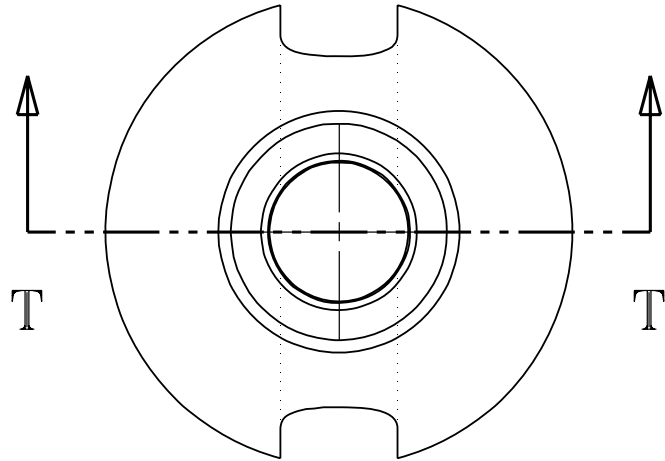
SECTION S-S



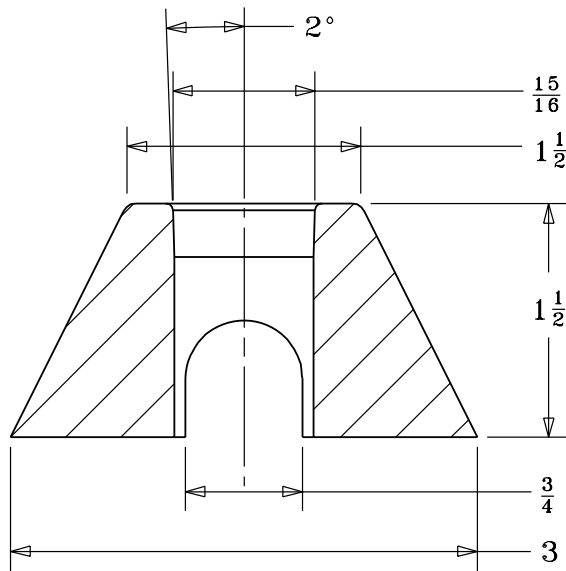


Type 2 Infusion Port

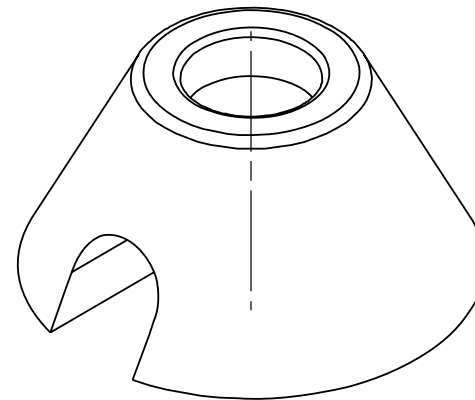
Part Number
2 - IP3-H3



All Dimensions are
approximate



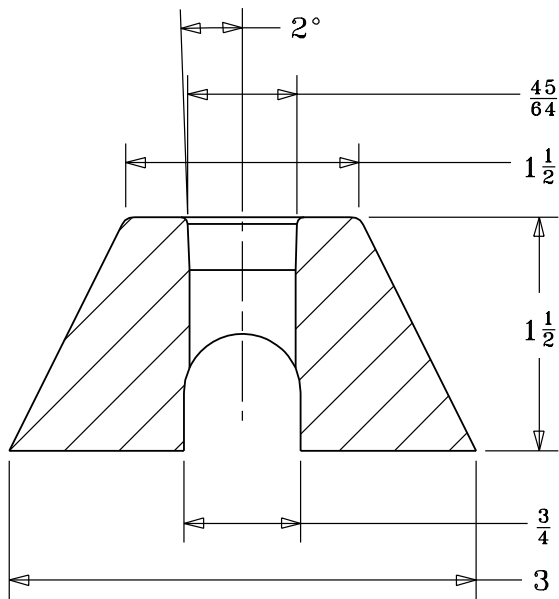
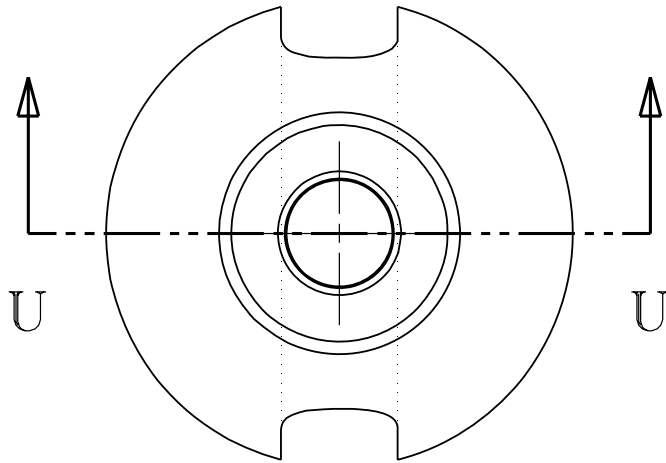
SECTION T-T





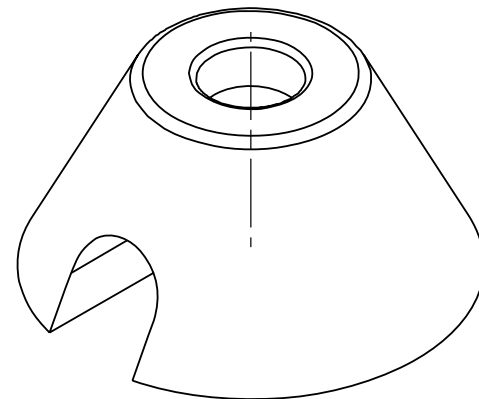
Type 2 Infusion Port

Part Number
2 - IP2-H3



SECTION U-U

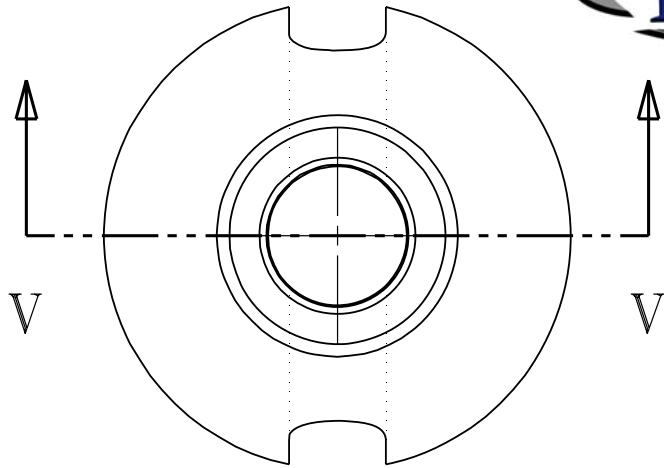
All Dimensions are
approximate



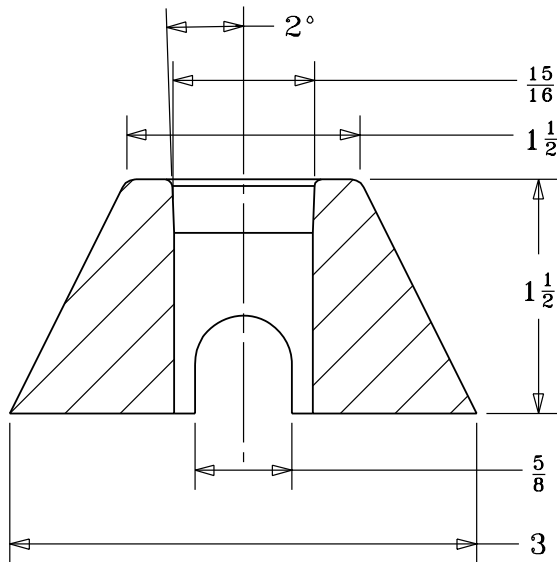


Type 2 Infusion Port

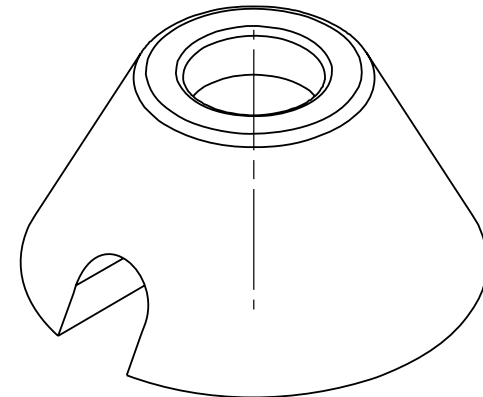
Part Number
2 - IP3-H2



All Dimensions are
approximate



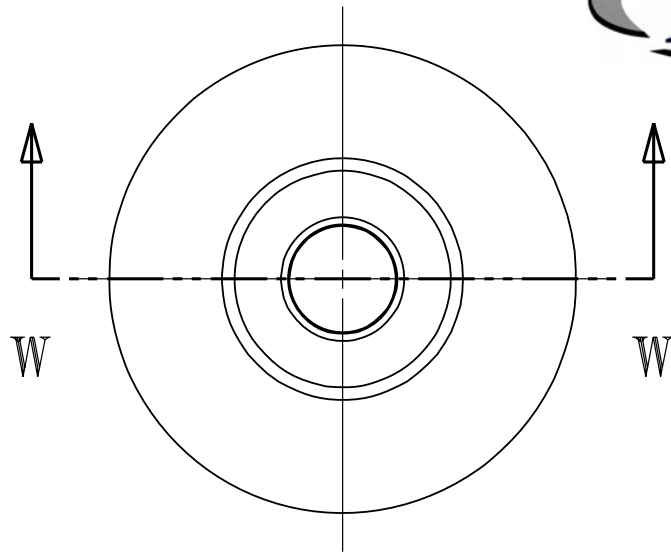
SECTION V-V



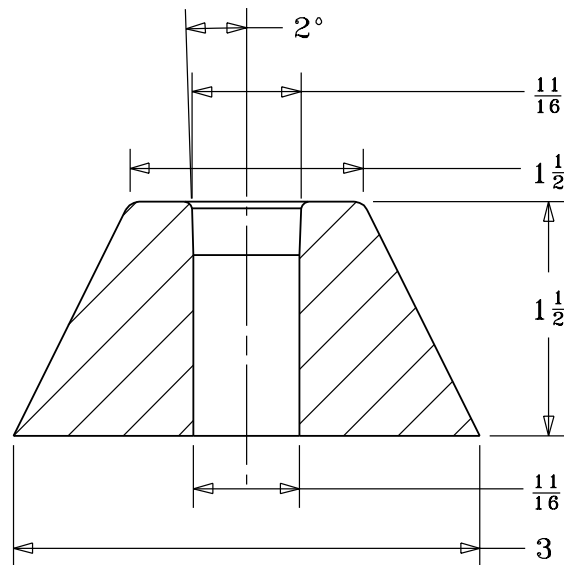


Type 2 Infusion Port

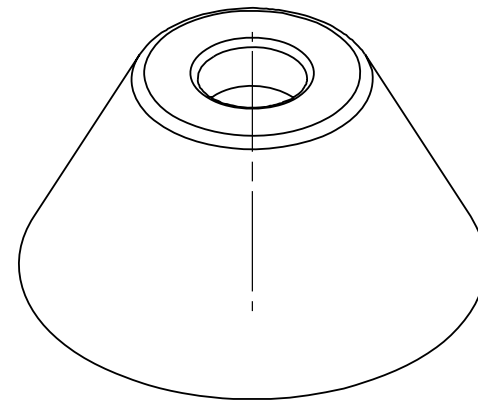
Part Number
2 - IP2-B



All Dimensions are
approximate



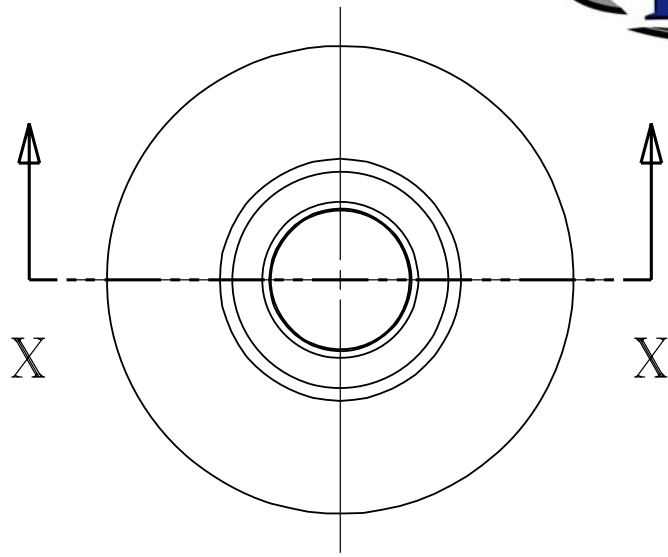
SECTION W-W



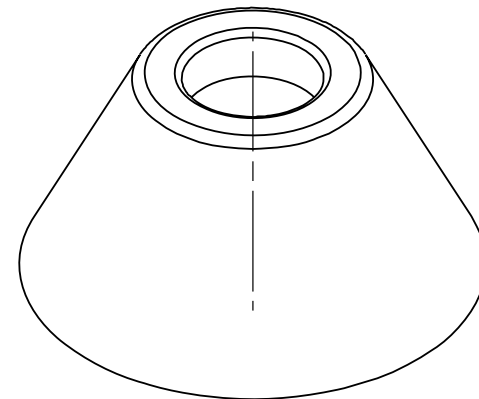
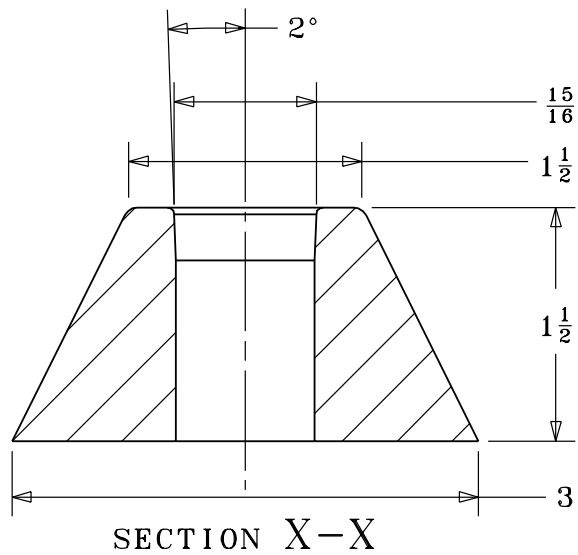


Type 2 Infusion Port

Part Number
2 - IP3-B



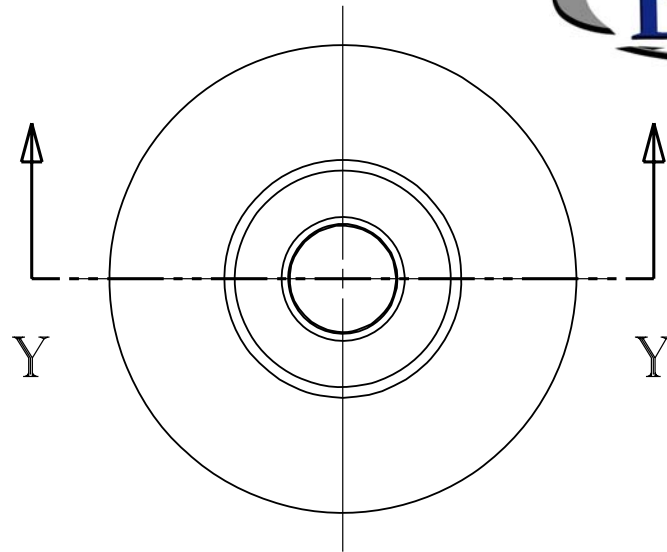
All Dimensions are
approximate



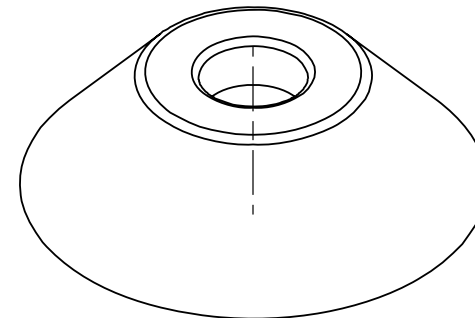
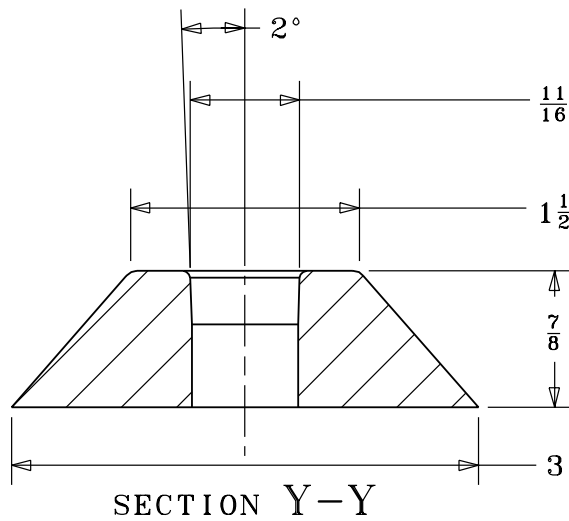


Type 2 Infusion Port

Part Number
2 - IP2-BS



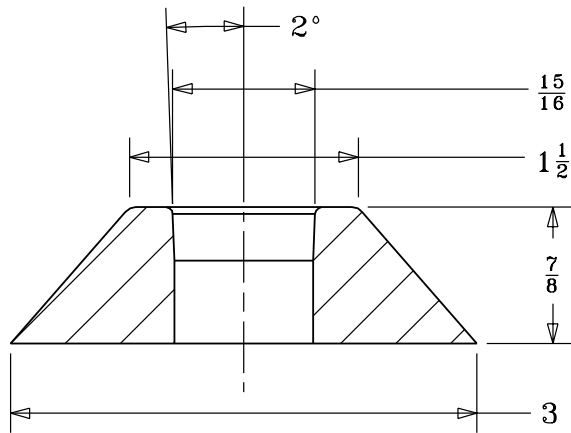
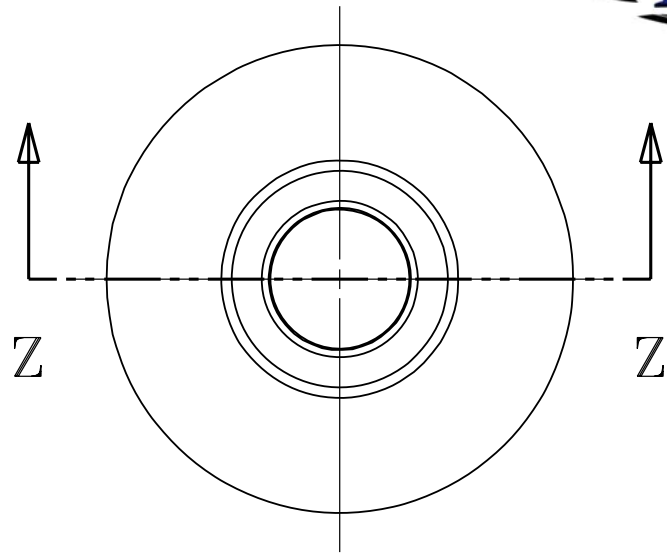
All Dimensions are
approximate





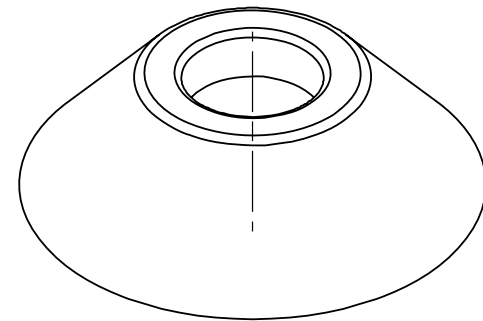
Type 2 Infusion Port

Part Number
2 - IP3-BS



SECTION Z-Z

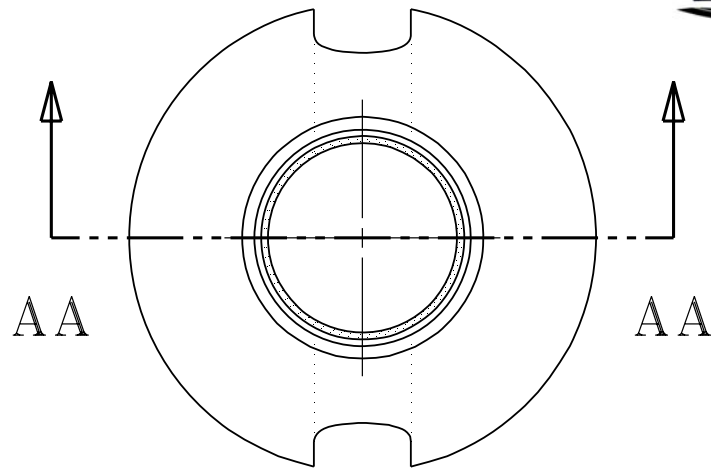
All Dimensions are
approximate



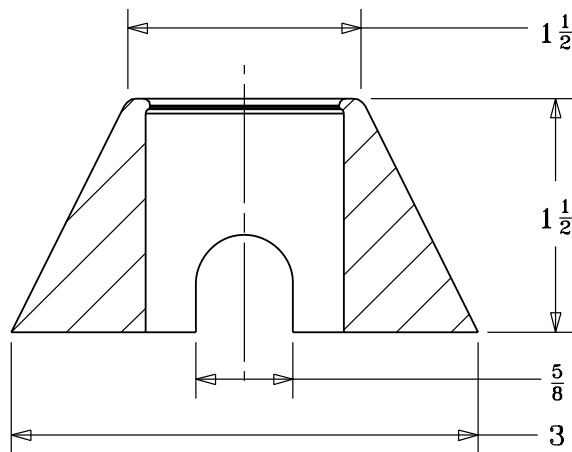


Type 3 Infusion Port
Patent Pending

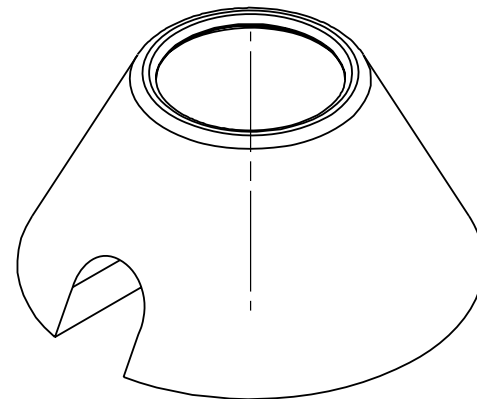
Part Number
3 - IP4-H2



All Dimensions are
approximate



SECTION AA-AA



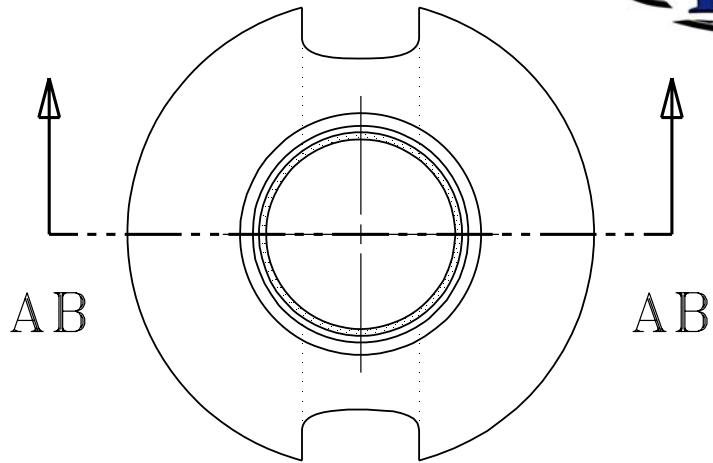


Type 3 Infusion Port

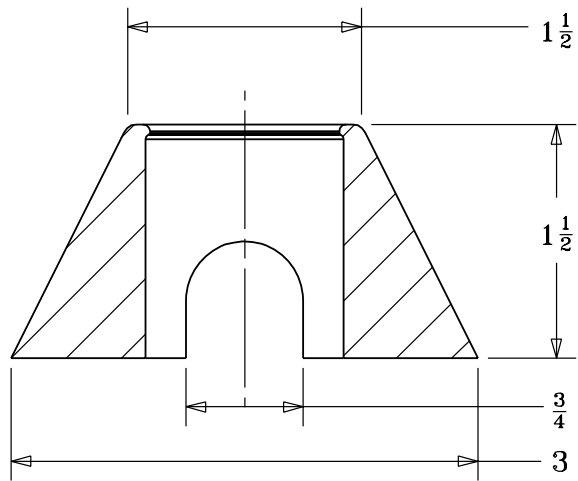
Patent Pending

Part Number

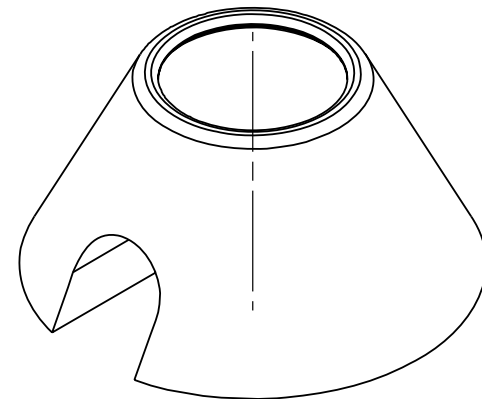
3 - IP4-H3



All Dimensions are
approximate



SECTION AB-AB



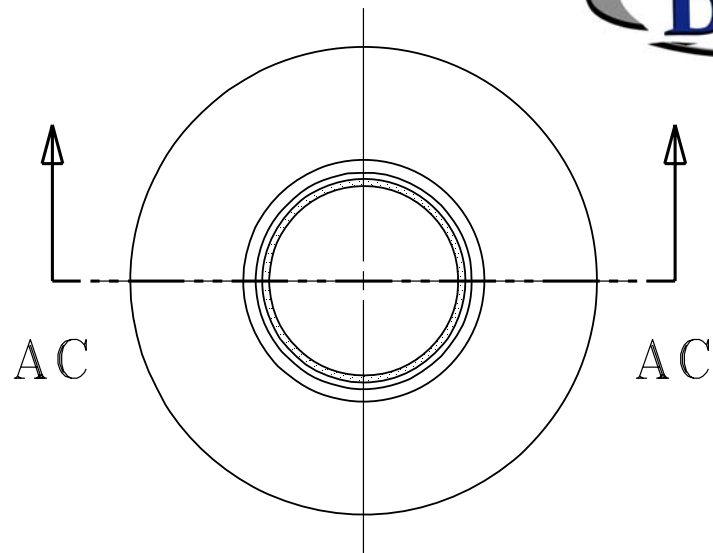


Type 3 Infusion Port

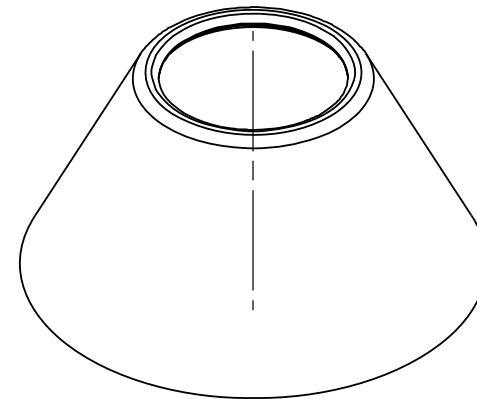
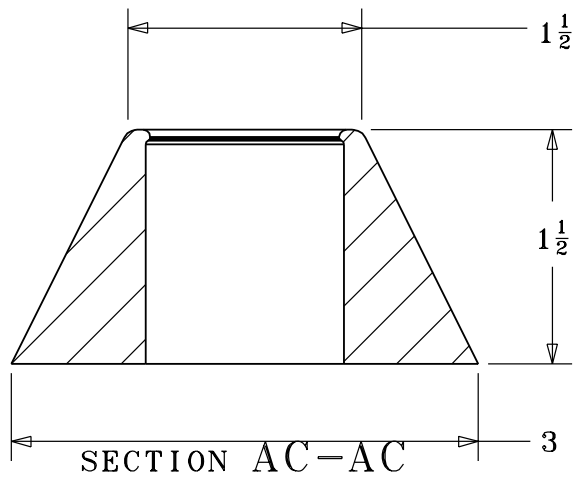
Patent Pending

Part Number

3 - IP4-B3



All Dimensions are
approximate



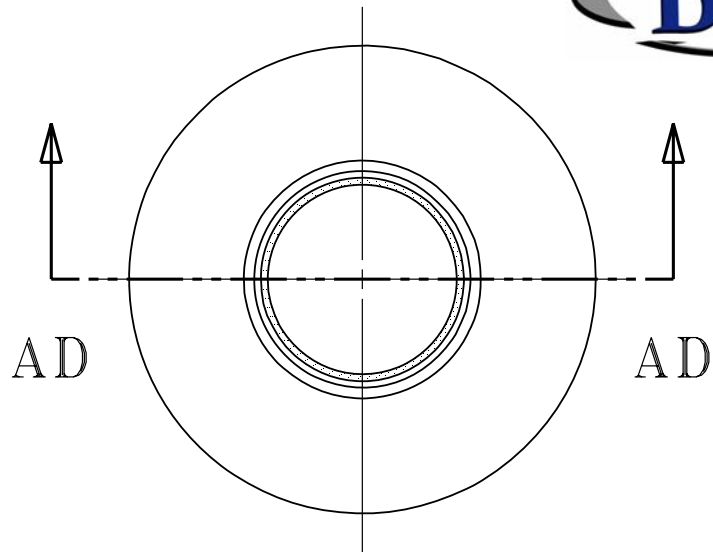


Type 3 Infusion Port

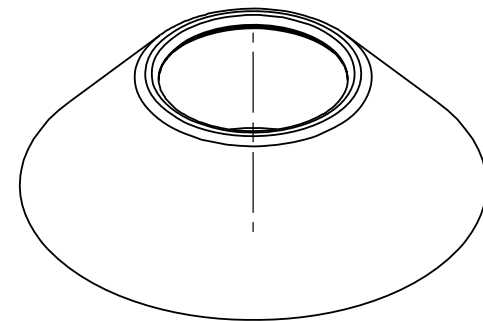
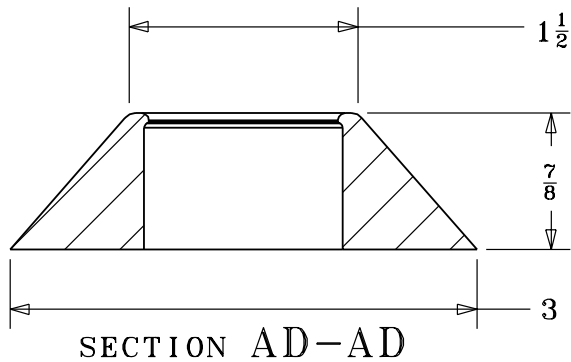
Patent Pending

Part Number

3 - IP4-BS



All Dimensions are
approximate



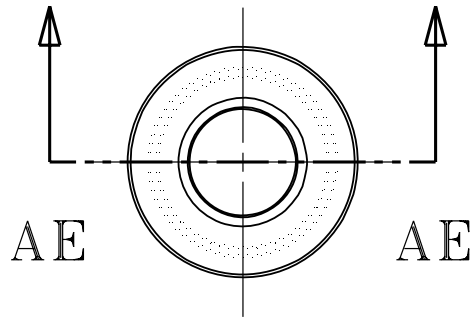


Type 3 Infusion Port Bushing

Patent Pending

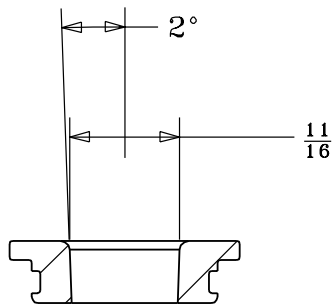
Part Number

3 - IPB-2

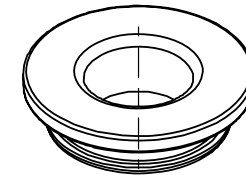


Use this bushing and

Port #	for Assm #
3 - IP4-H2	3 - IP4-H2A2
3 - IP4-H3	3 - IP4-H3A2
3 - IP4-BS	3 - IP4-BSA2



All Dimensions are approximate



SECTION AE-AE

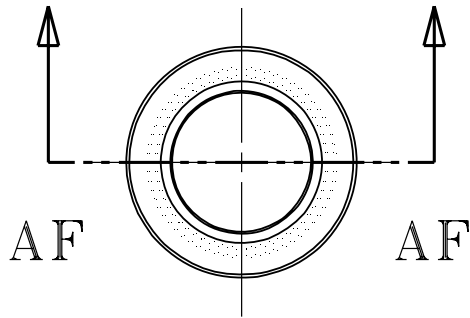


Type 3 Infusion Port Bushing

Patent Pending

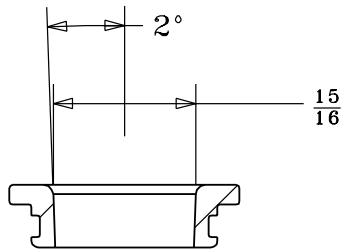
Part Number

3 - IPB-3



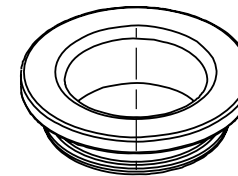
Use this bushing and

Port #	for Assm #
3 - IP4-H2	3 - IP4-H2A3
3 - IP4-H3	3 - IP4-H3A3
3 - IP4-BS	3 - IP4-BSA3



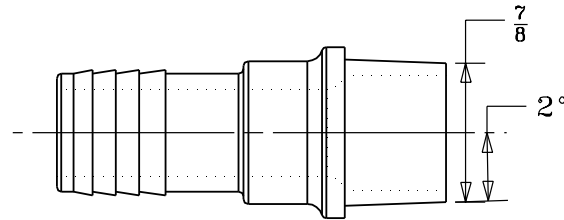
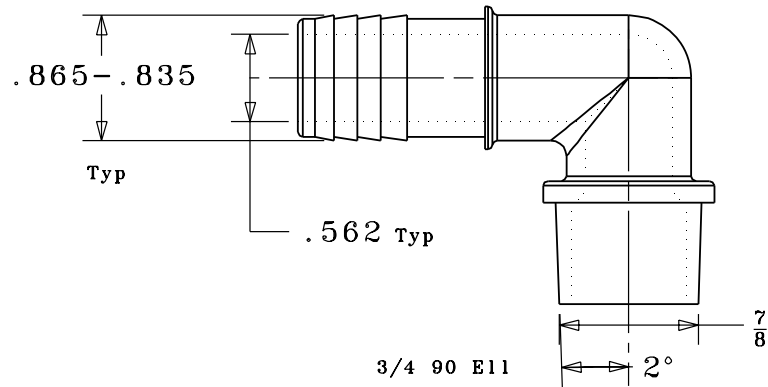
SECTION AF-AF

All Dimensions are approximate

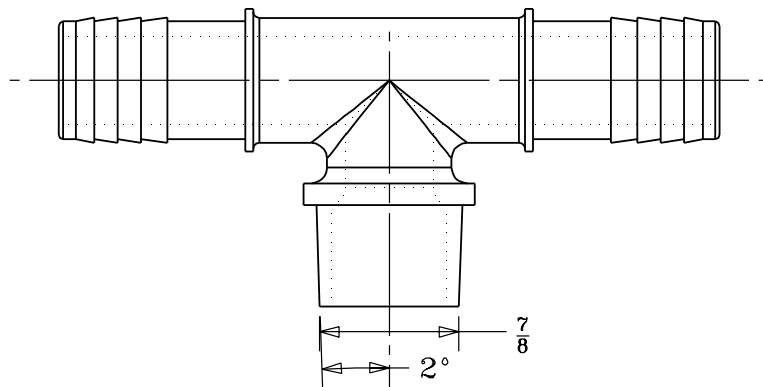




3/4" Fittings for Type 2 & 3



3/4 Straight



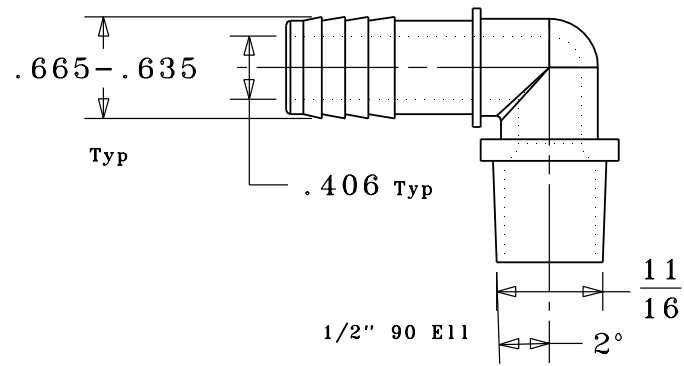
3/4 Tee

	Part Number
90 E11	75 - IP3-0
Straight	75 - IP4-0
Tee	75 - IP5-0

All Dimensions are approximate

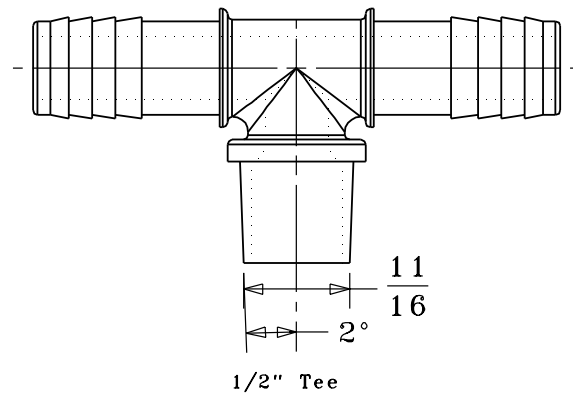
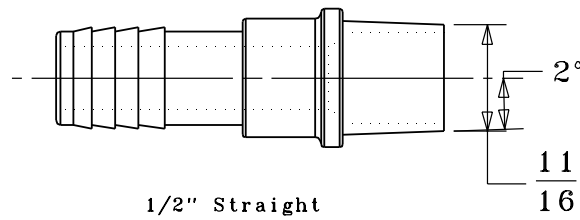


1/2" Fittings for Type 2 & 3



Part Number

90 E11	50 - IP3-0
Straight	50 - IP4-0
Tee	50 - IP5-0



All Dimensions are approximate